

## Abfindungen nach Beträgen

	2022	2023	2024			
Jänner	2.827.962,00	3.248.587,56	3.450.164,04			
Februar	2.478.615,30	2.931.886,35	3.726.856,22			
März	4.748.094,80	5.719.248,05				
April	4.052.156,98	4.368.652,70				
Mai	3.769.429,33	4.310.035,11				
Juni	3.822.758,42	4.177.581,67				
Juli	3.868.539,67	4.136.616,62				
August	2.819.182,30	2.947.599,86				
September	2.118.116,15	2.375.978,46				
Oktober	2.666.404,39	3.083.997,62				
November	2.894.679,80	2.484.065,13				
Dezember	2.631.088,35	2.785.157,51				
<b>Gesamt</b>	<b>38.697.027,49</b>	<b>42.569.406,64</b>	<b>7.177.020,26</b>			

	2016	2017	2018	2019	2020	2021
Jänner	1.987.678,71	2.484.697,11	2.707.088,99	2.462.736,99	2.766.145,10	2.456.882,23
Februar	3.039.372,75	2.560.557,06	2.664.103,07	2.580.347,95	3.038.089,80	2.856.141,50
März	3.895.124,81	4.107.982,20	4.479.790,79	4.086.640,54	4.939.578,09	5.487.158,76
April	2.734.871,96	2.402.269,37	2.973.768,92	3.365.209,69	3.372.165,12	4.070.497,81
Mai	2.422.679,01	2.425.828,07	2.788.350,22	3.317.830,38	2.709.786,85	2.964.608,32
Juni	3.674.044,84	3.100.622,24	3.867.002,42	3.733.565,82	3.448.388,66	2.922.512,37
Juli	3.173.665,16	3.155.239,13	3.598.345,33	4.750.251,12	3.909.966,39	3.294.286,06
August	2.293.405,89	2.084.786,00	2.754.195,16	2.513.188,05	2.480.030,87	1.935.606,12
September	1.746.907,68	1.551.176,82	1.586.321,35	1.888.228,81	2.461.731,64	1.920.839,99
Oktober	2.309.009,18	2.541.771,82	2.862.729,01	3.005.356,52	2.433.083,55	2.197.329,38
November	1.412.948,72	2.208.351,57	2.284.901,80	2.312.436,74	2.033.085,98	2.506.551,48
Dezember	2.940.192,49	2.179.191,40	2.277.749,80	2.487.774,54	2.048.832,74	2.671.301,74
<b>Gesamt</b>	<b>31.629.901,20</b>	<b>30.802.472,79</b>	<b>34.844.346,86</b>	<b>36.503.567,15</b>	<b>35.640.884,79</b>	<b>35.283.715,76</b>

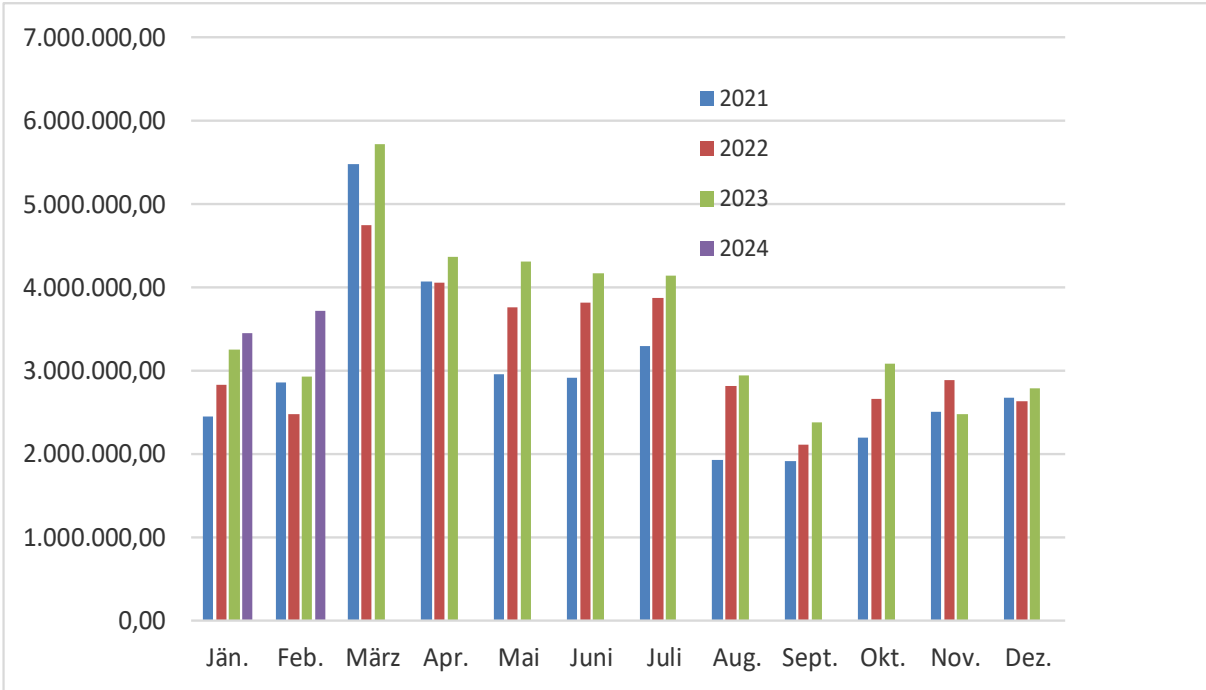
## Abfindungen nach Beträgen

	2010	2011	2012	2013	2014	2015
Jänner	4.059.166,02	4.196.765,84	4.429.621,03	3.488.866,78	4.518.171,29	2.789.340,08
Februar	3.394.796,89	3.809.265,83	3.821.666,85	3.774.099,71	3.980.225,88	2.653.324,31
März	4.358.295,20	4.545.397,36	3.920.773,86	4.253.473,88	4.480.496,32	4.025.144,55
April	5.925.446,64	5.657.194,34	5.721.486,77	4.851.827,18	5.204.723,70	3.218.476,88
Mai	5.060.372,61	5.683.522,22	5.336.112,73	4.485.010,36	4.833.311,47	2.609.256,52
Juni	7.205.426,93	7.494.038,72	6.427.183,76	5.931.936,73	6.247.783,79	4.661.350,96
Juli	5.388.109,93	5.264.191,76	4.476.876,05	4.706.638,05	5.459.879,81	4.311.767,72
August	3.328.691,41	3.931.096,04	3.480.460,85	3.265.447,49	3.123.685,35	2.203.147,80
September	4.131.810,84	3.260.722,74	2.197.145,56	2.408.061,22	2.994.238,34	2.042.833,12
Oktober	3.416.280,66	4.164.302,58	3.571.050,20	3.452.110,42	3.824.215,07	2.559.817,10
November	3.996.451,67	3.996.877,14	2.941.965,27	2.968.414,77	3.105.663,49	2.298.679,62
Dezember	3.833.403,79	3.741.941,02	2.509.286,53	2.764.694,05	3.692.208,38	2.114.199,30
<b>Gesamt</b>	<b>54.098.252,59</b>	<b>55.745.315,59</b>	<b>48.833.629,46</b>	<b>46.350.580,64</b>	<b>51.464.602,89</b>	<b>35.487.337,96</b>

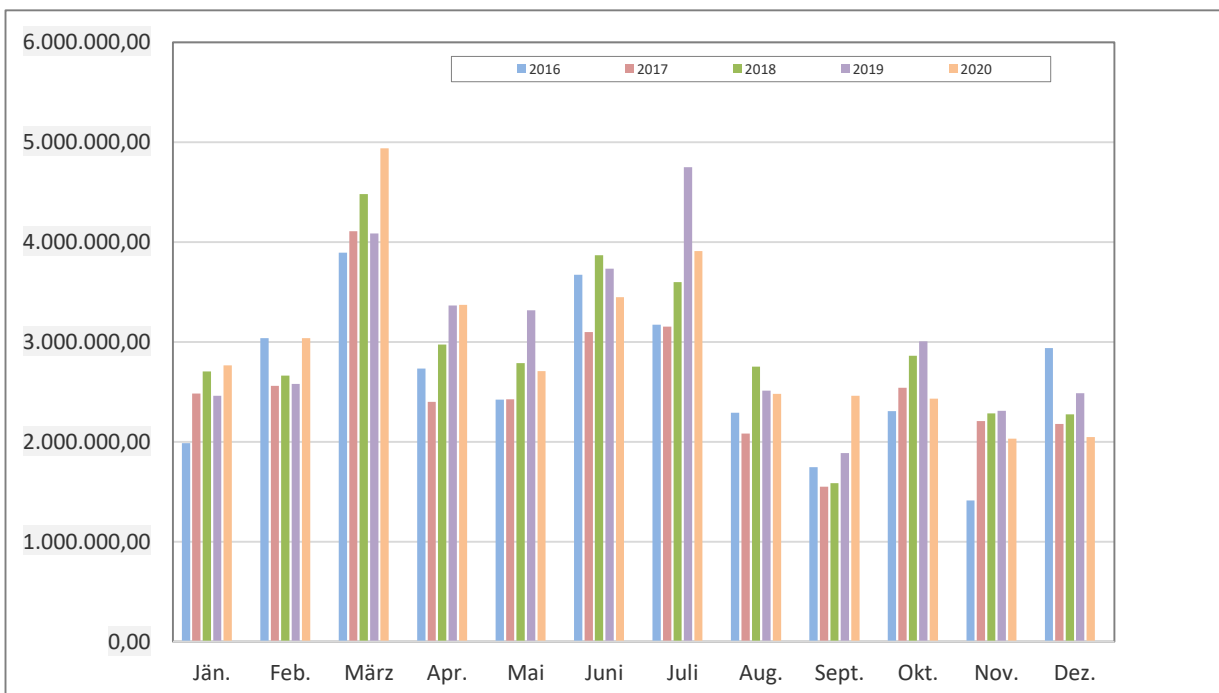
	2004	2005	2006	2007	2008	2009
Jänner	4.043.823,58	3.168.226,26	2.975.745,30	4.087.819,00	4.116.652,89	4.224.649,41
Februar	3.105.846,53	2.902.215,10	2.498.212,63	3.303.659,78	4.068.394,88	3.496.709,22
März	3.970.025,84	3.504.973,64	2.969.060,12	4.983.294,03	3.754.356,68	4.353.188,30
April	5.000.495,08	4.483.710,78	3.451.769,39	4.986.069,36	5.603.528,18	5.851.561,89
Mai	4.974.043,26	4.234.606,12	5.534.466,27	5.014.381,16	5.264.850,16	5.925.688,82
Juni	6.755.699,07	6.785.208,29	439.606,80	6.643.041,33	6.711.684,75	7.797.999,77
Juli	4.741.003,61	3.744.713,18	6.041.039,12	5.625.117,93	4.907.947,69	6.081.758,18
August	2.971.252,33	2.880.900,27	3.055.962,41	3.054.221,34	3.299.862,21	3.302.580,94
September	4.124.576,16	3.951.521,35	3.012.237,85	3.709.243,20	4.593.480,55	4.978.359,39
Oktober	3.106.014,34	2.816.386,18	3.201.343,36	4.530.663,09	4.105.505,19	3.675.661,96
November	3.476.281,74	3.116.807,25	3.324.355,73	3.608.154,35	3.772.647,43	3.419.255,76
Dezember	3.271.483,89	3.099.654,45	2.952.977,51	3.341.794,55	3.604.420,26	3.067.820,18
<b>Gesamt</b>	<b>49.540.545,43</b>	<b>44.688.922,87</b>	<b>39.456.776,49</b>	<b>52.887.459,12</b>	<b>53.803.330,87</b>	<b>56.175.233,82</b>

## Abfindungen nach Beträgen

2021- 2024

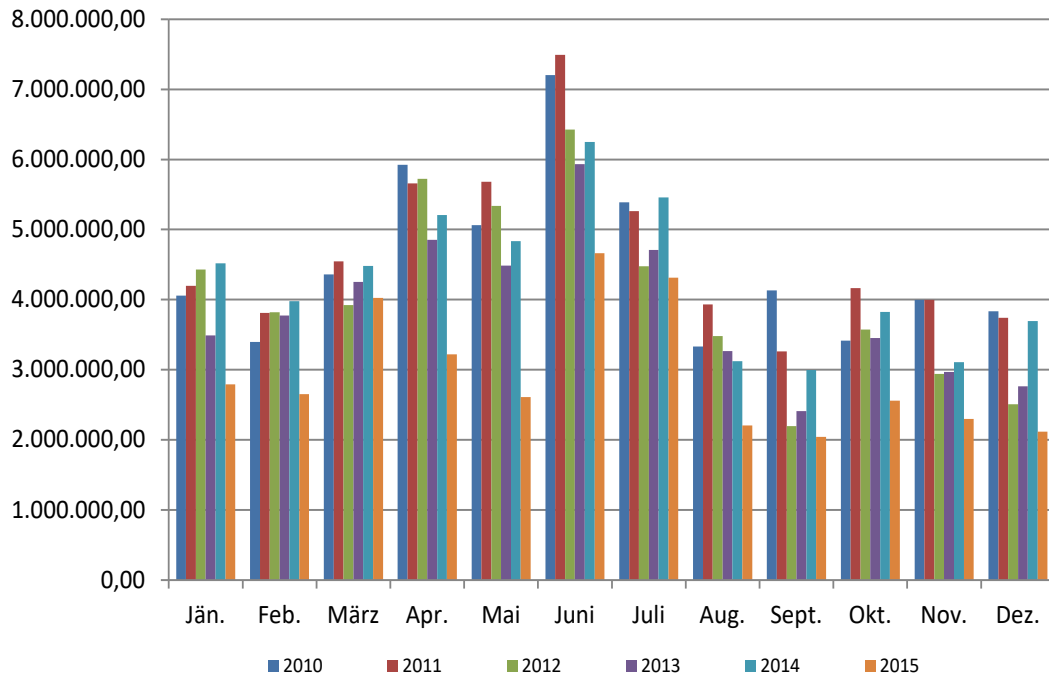


2016 - 2020

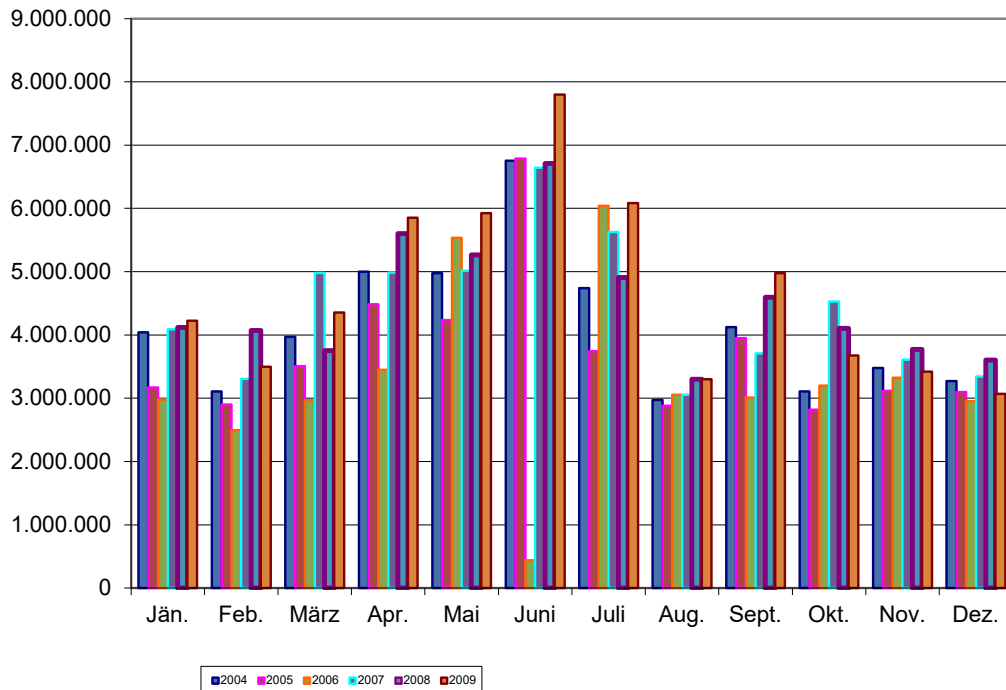


## Abfindungen nach Beträgen

2010 - 2015



2004 - 2009



Anmerkung: Im Juni 2006 konnten wegen der Umstellung auf eBUAK erst gegen Monatsende Abfindungen verrechnet werden.